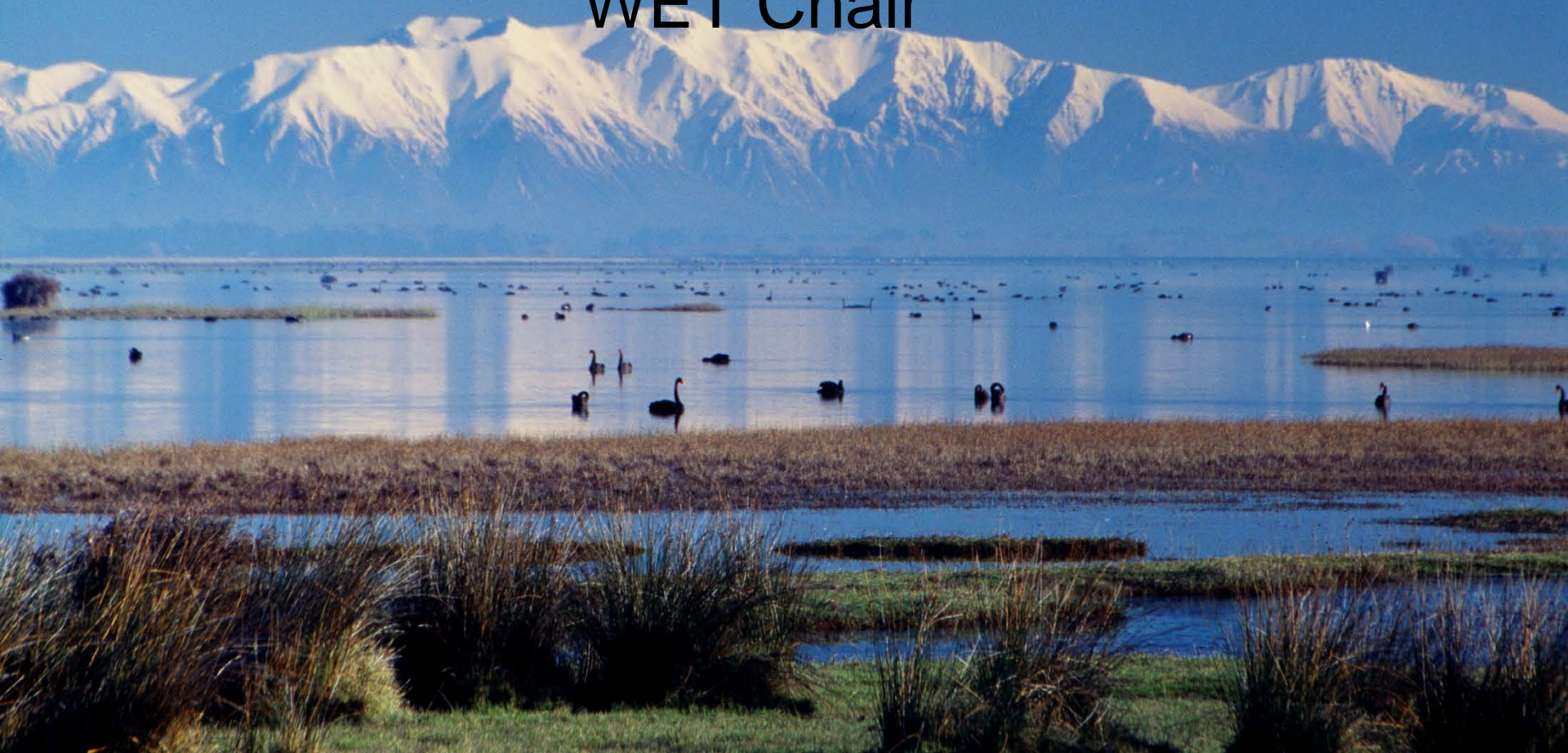




Introduction – Brett Painter

WET Chair



Living Lakes Symposium 2



Waihora Ellesmere Trust

www.wet.org.nz

A brief history...

- Project initiated by ECan in response to water quality concerns in the lake and its tributaries
- Community consultation in the catchment and the formation of the issues group
- Issues group met frequently over 2 years to identify issues and work to develop the elements of the strategy.
- Created a Community Strategy with a vision statement, goals, targets, actions and responsibilities.
- The lake issues group formed the founding trustees for the Waihora Ellesmere Trust in 2003.

Waihora Ellesmere Trust

Our vision..

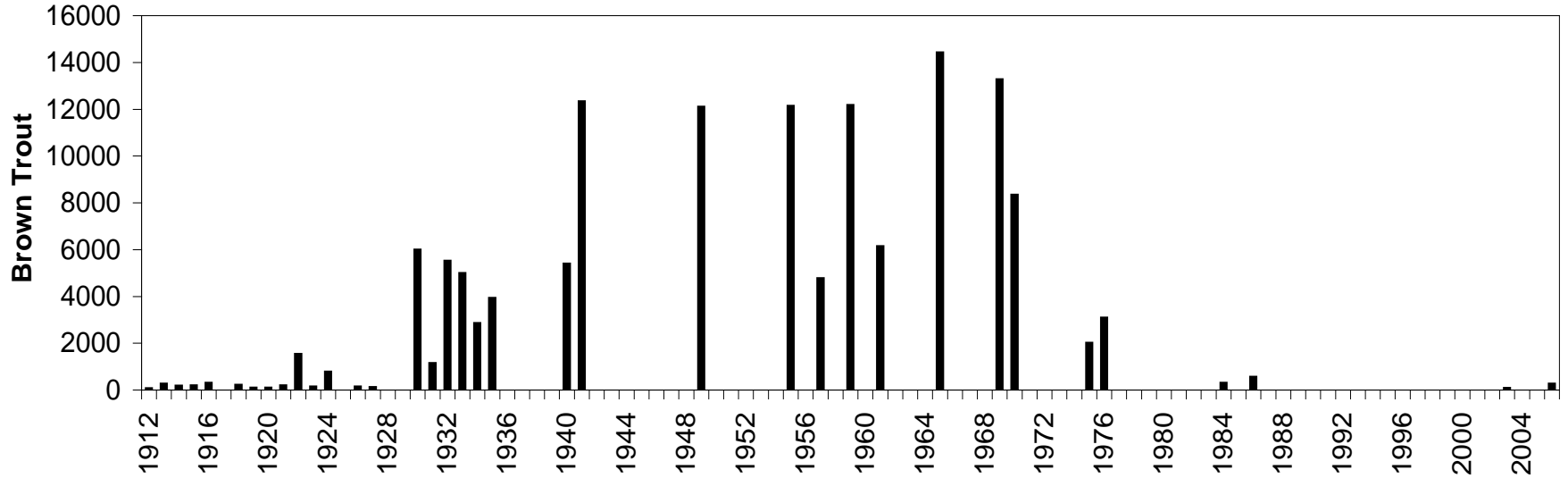
- A place where healthy and productive water provides for the many users of the lake while supporting the diversity of plants and wildlife that make this place unique.
- A place of cultural and historical significance that connects us with our past and our future.
- A place where environmental, customary, commercial, and recreational values are balanced while respecting the health of the resource.
- A special wide open place for the enjoyment and wonderment of present and future generations.
- A place of contemplation and tranquility as well as activity, a place just to be.

Waihora Ellesmere Trust

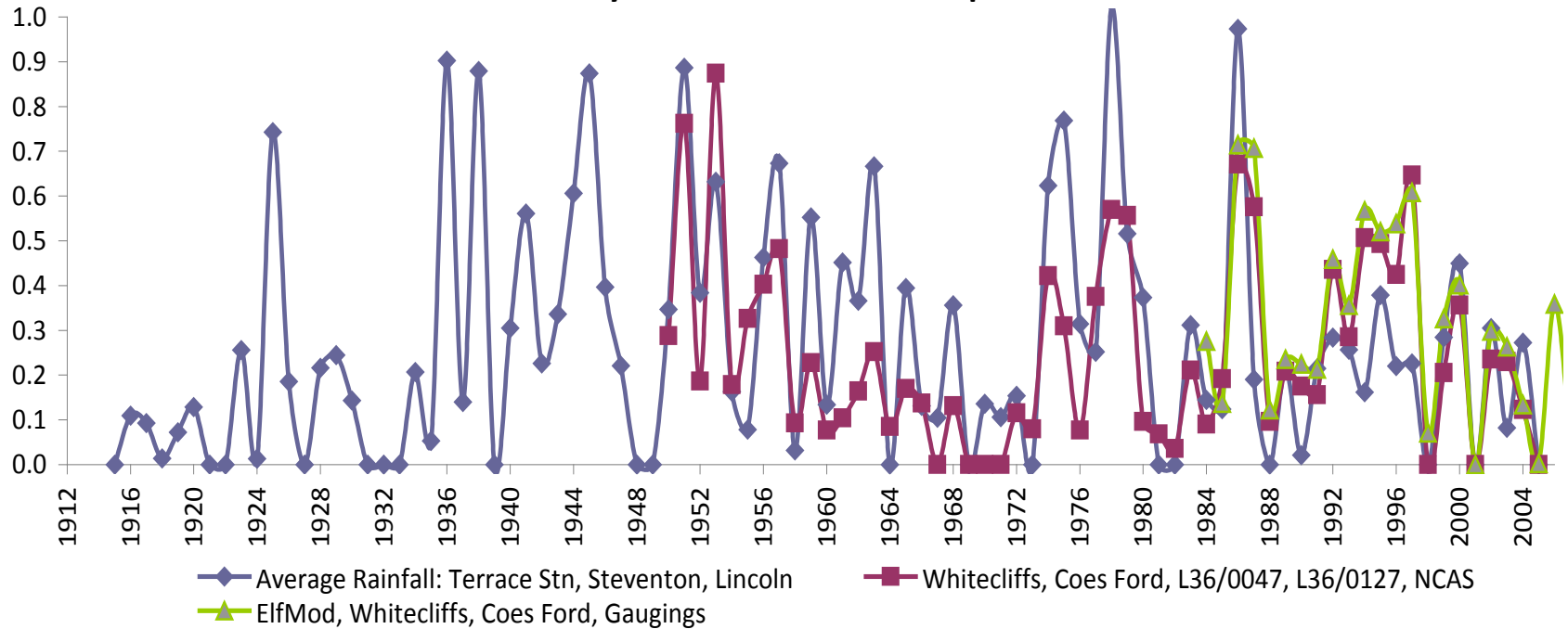
Strategic actions

- 1. Manage the lake and its catchment in an integrated manner, i.e. ensure all plans, policies and actions are consistent and focus on the overall health of the lake and its catchment;**
- 2. Continue to provide opportunities for ongoing dialogue and debate on the different aspirations of the stakeholders in the lake and catchment;**
- 3. Over time, and involving the community, improve the health of the lake and its tributaries so that there is community ownership and pride in its local, national and potential international significance;**
- 4. Promote the principles of the Treaty of Waitangi.**

Brown Trout through Selwyn River Spawning Trap



Estimates of Selwyn River Connection Proportion



Sustainable Water Allocation for Families, Fish and Farming: A Wicked Problem or a Wicked Solution?

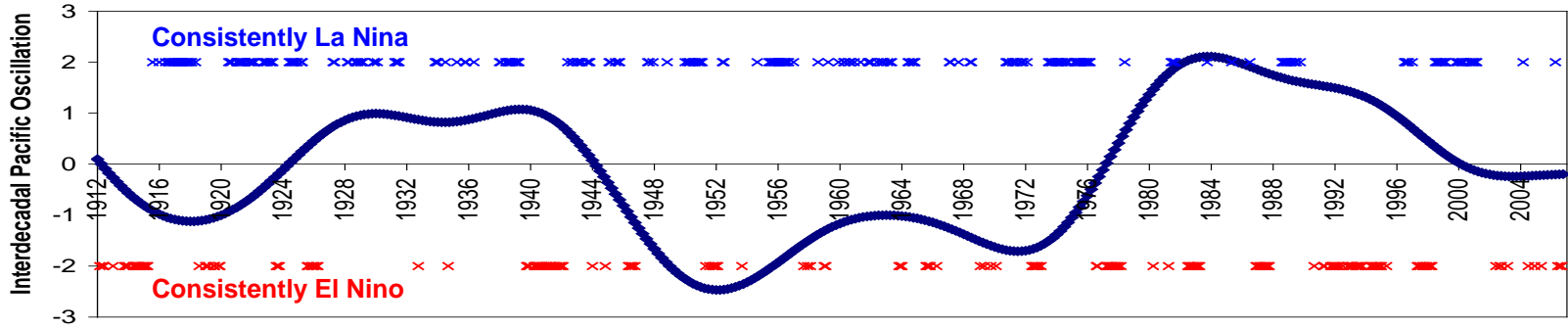
BDM Painter (2009)

{www.selwyninfo.org}

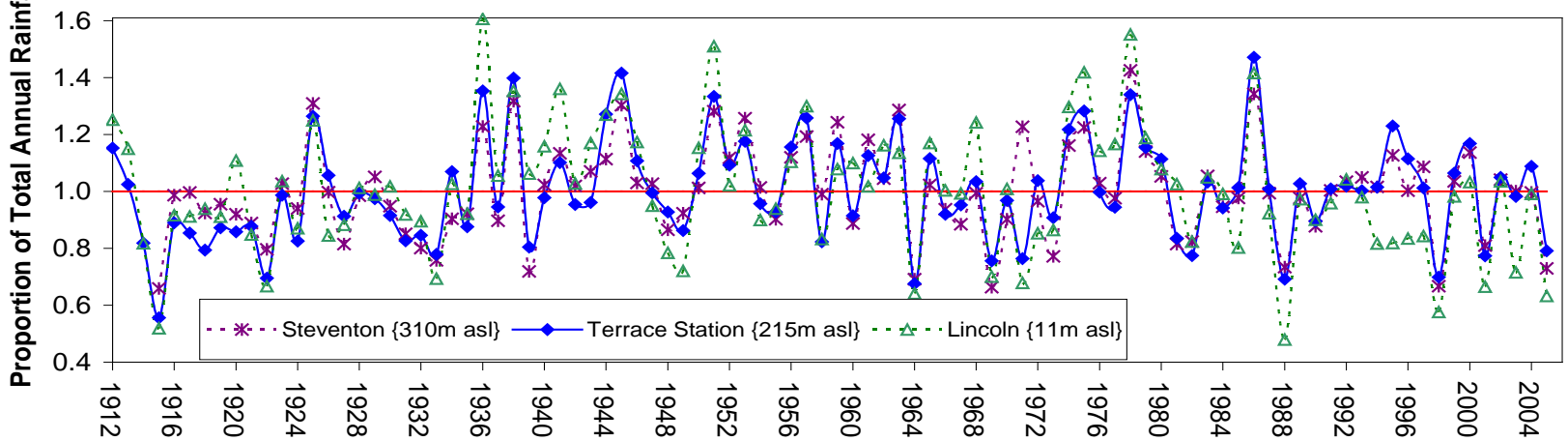
Most Likely Contributing Factors to Selwyn Brown Trout Spawning Population Changes:

1. Significant changes in river connection proportion due to a combination of climatic effects.
2. Loss of habitat through channelisation and loss of macrophyte weed beds.

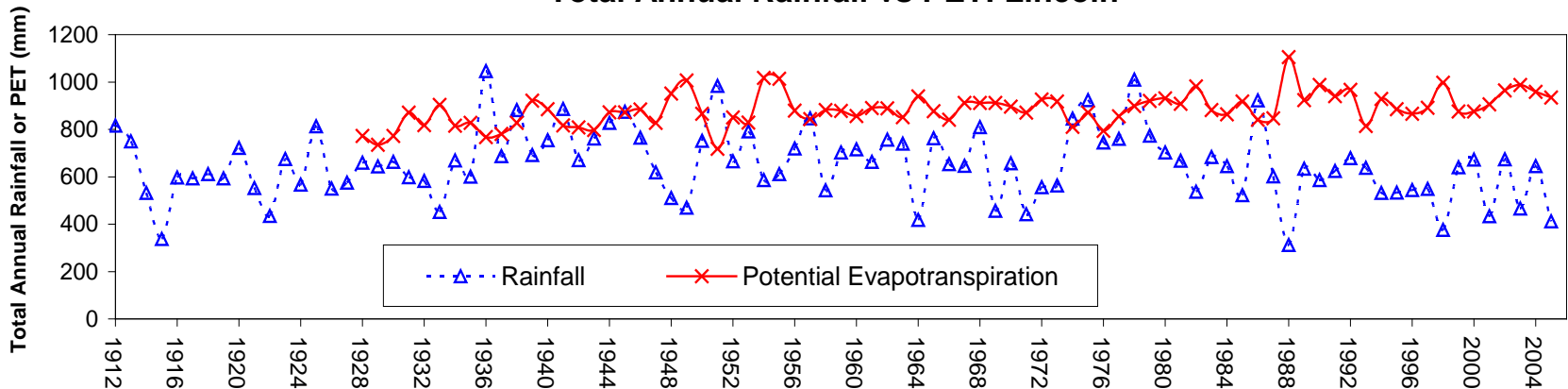
Interdecadal Pacific Oscillation and Southern Oscillation Phases



Annual Rainfall Proportion of 90 Year Average for 3 Long Term Records



Total Annual Rainfall vs PET: Lincoln



Sustainable Water Allocation for Families, Fish and Farming: A Wicked Problem or a Wicked Solution? - BDM Painter (2009)

Recommendations:

- 1. Prioritise further riparian fencing and enhancement, and efforts to address non-point-source pollution and sedimentation. Monitor and report progress.**
- 2. Research macrophyte weed bed re-establishment, effects of lake opening regime and dynamic water allocation methods.**
- 3. Research future climatic implications on ocean support, lake opening regime, spawning reach, Selwyn River connection and the timing of artificial re-stocking programmes.**

Feedback?

www.wet.org.nz

1. Does the research and analysis make sense for the modelled values
2. Where further information and analysis is required
3. Feedback on the process and the symposium format
4. What you and your organisation are going to do in and for this catchment



Integrated Catchment/Zone Management Principles

1. Everything is connected to everything else
2. Everything must go somewhere
3. Nature knows best
4. There's no such thing as a free lunch
5. Avoiding and mitigating potential adverse effects of activities is only the first step. All activities must seek to contribute benefits across the sustainability spectrum