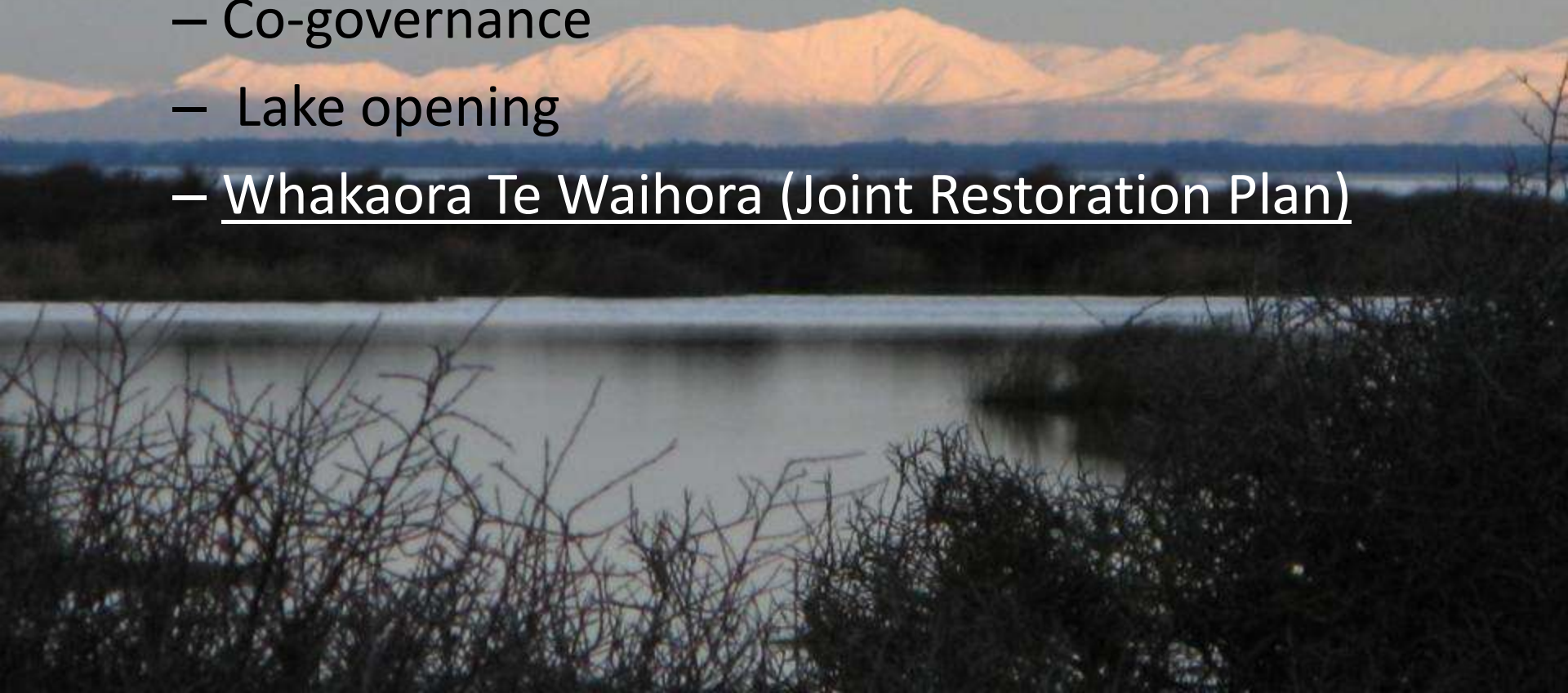


Whakaora Te Waihora Joint Restoration Plan



Te Waihora

- Ngāi Tahu & Environment Canterbury working together on:
 - Co-governance
 - Lake opening
 - Whakaora Te Waihora (Joint Restoration Plan)



Whakaora Te Waihora

- Joint programme
- Shared commitment
- Restoration & rejuvenation of mauri and ecosystem health of Te Waihora

12 APR 2006

Draft Joint Restoration Plan - Aims

- Accelerate restoration of internationally significant wetland
- Begin restoring and enhancing specific cultural sites and mahinga kai.
- Restoration of specific lowland tributary streams and riparian habitats.
- Improved lake and catchment management practices
- Monitoring and investigations driving management

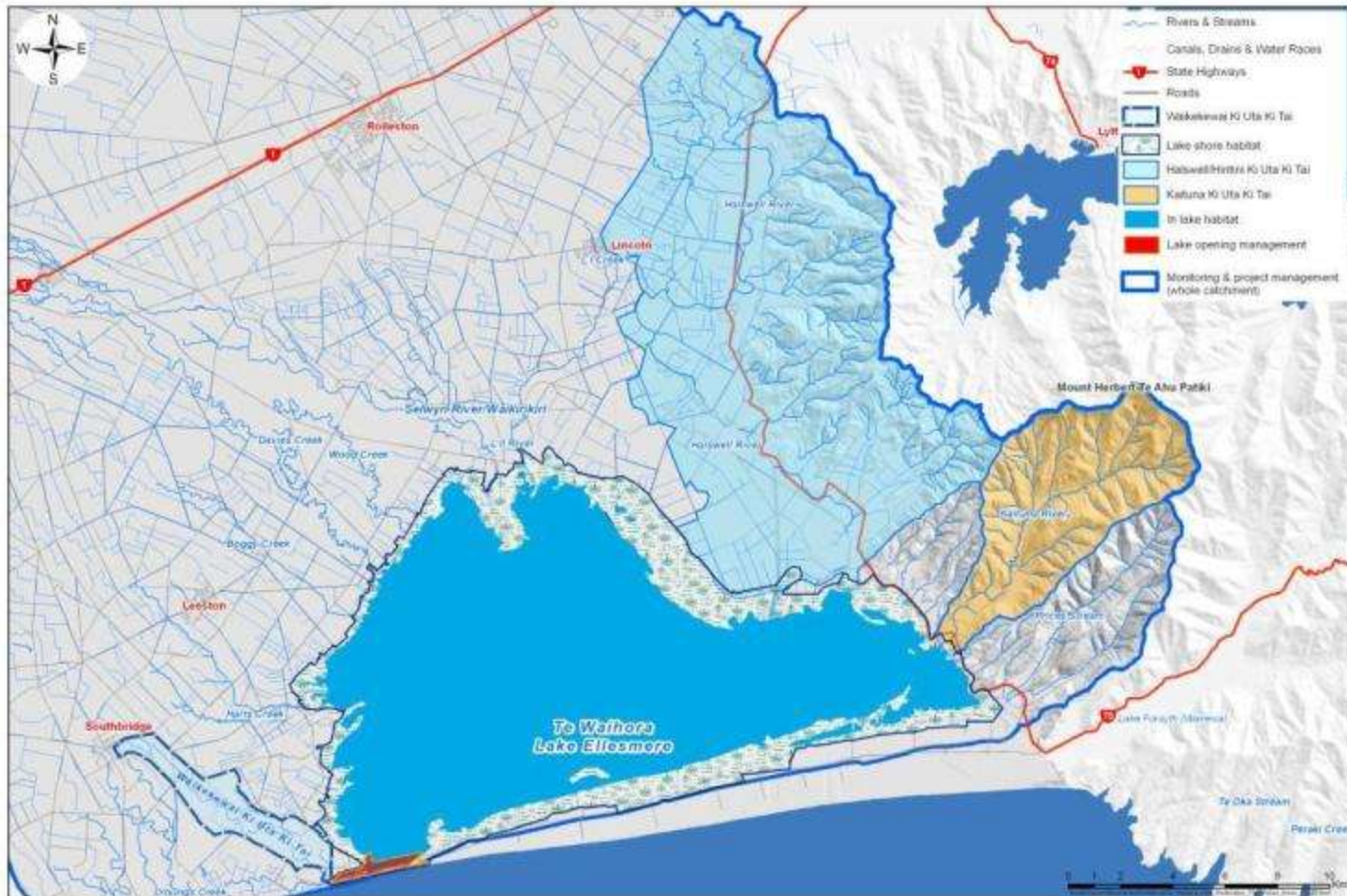
Draft Joint Restoration Plan – Overview

- Long term approach Ki Uta Ki Tai
- Cultural & ecological values jointly considered
- Two Generation Outcomes & Opportunities
- Proposed two year work programme:
 - Short term gains in ecosystem health
 - Research actions to set us up for future management

Draft Joint Restoration Plan – Two Generation Outcomes

- In lake habitat
- Lake shore habitat
- Lowland streams & riparian habitats
- Catchment management
- Monitoring & investigation driving management

Draft Joint Restoration Plan – Two Year Work Programme



Te Waihora Joint Restoration Plan Focus Areas

Draft Joint Restoration Plan – Action on the ground

- Finalising draft
 - Engaging with key stakeholders
 - Finalising plan early Dec
- Action on the ground
 - Continuation of existing work
 - Appointment of project manager
 - Coordination of work programme

A scenic landscape featuring a rocky foreground, waves, a bird, and snow-capped mountains. The foreground is filled with dark, smooth, rounded stones. In the middle ground, waves are breaking onto a pebbly shore. A white bird is perched on a rock in the water. The background shows a range of mountains with patches of snow under a clear blue sky.

Thank you