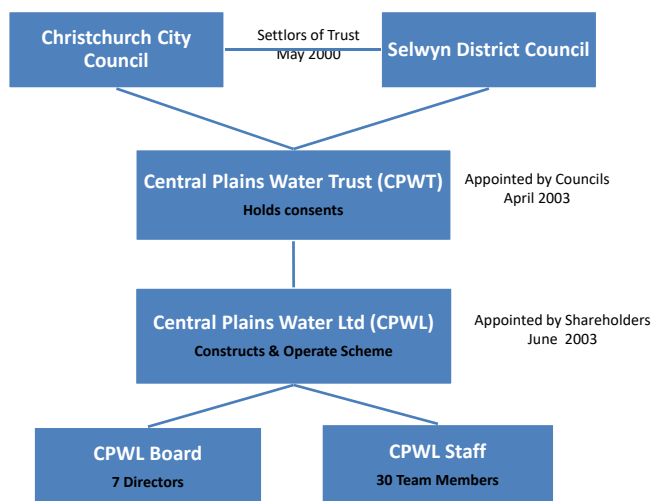


# Living Lake Symposium 2017 Central Plains Water Limited



## Current Status of CPW

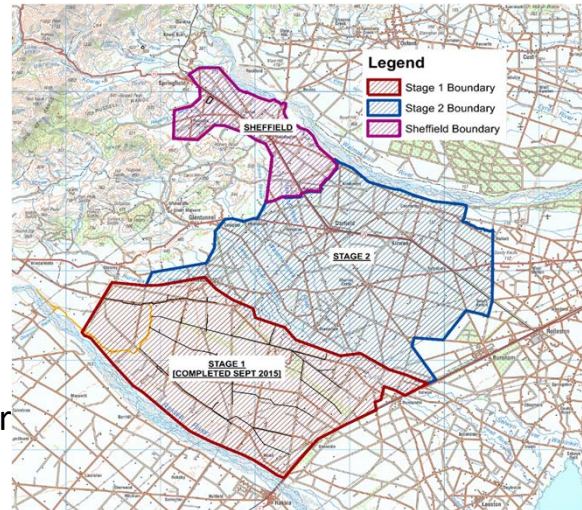


- CPWT (a public charitable trust) = consent holder - owns consents to irrigate **60,000ha (lodged 2008, granted 2012)**
- CPWL = farmer shareholder entity (390) – established to raise funds to obtain and implement consents.
- MOA between CPWT and CPWL – licences use of the consents to CPWL
- CPWL - Cost recovery model



## Current Status of CPW

- Stage 1 20,000 ha operational – 2 years (this is the 3<sup>rd</sup>)
- Stage 2 under construction – September 2018
- Sheffield Operational end of October 2017



3



## CPWL Stage 1 & 2 Intake – Rakaia River



4





Offtake 5 construction



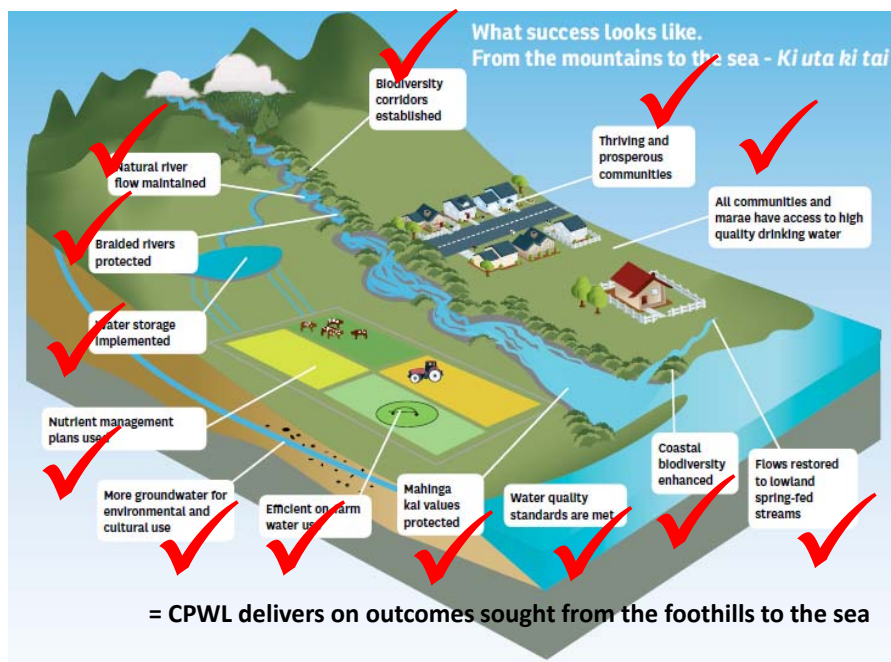
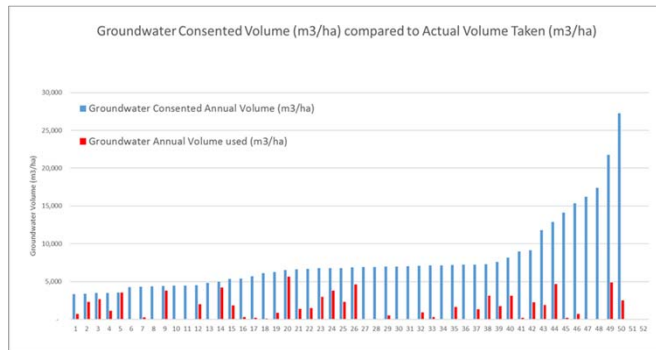
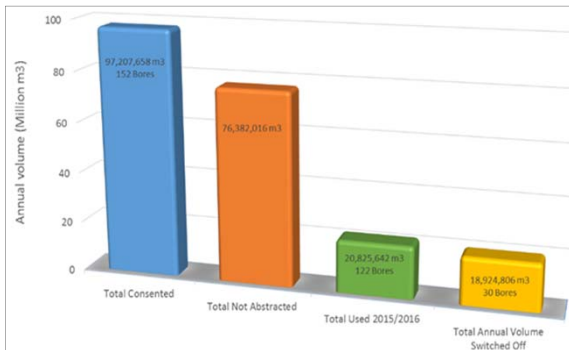
### GRP pipe – Glass reinforced plastic





# Selwyn Waihora

- » Selwyn Waihora catchment is over allocated – Groundwater abstraction and Nitrogen discharge.
- » 75% or 60Mm3 of groundwater was not abstracted as farmers switched to CPW run of river scheme.
- » Targeted Stream Augmentation





## Nutrient Management

- CPW opted for an allocation for new irrigation only
- 979 tonnes under Overseer® version 6.1.3
  - 621t is the existing/current dryland farming baseline
  - 358t is the new Nitrogen required to convert dryland to irrigation
  - This equates to 7% of the catchment load
- CPWL will manage ALL reporting and compliance of farm management for Stage 1, 2 and Sheffield i.e. 47,000ha
- By 2022 CPW irrigators = reduced the total N loss by 23%, this is 55t more than the load granted for new irrigation.

9



## CPW's Role in achieving Success Water Quality

### What Success Looks Like

- Water quality standards are met
- Nutrient management plans are used
- Mahinga Kai values are protected
- All communities have access to high quality drinking water
- Coastal Biodiversity enhanced

10





# Auditing Process

